

217Plus Data File Conversion Between Full and Upgrade Versions

The 217Plus Data File Converter is used to convert 217Plus data files (.RSE files) from 217Plus Full Version to/from 217Plus PRISM(R) Upgrade Version.

Different versions of the database engine are distributed with PRISM[®], which the 217Plus Upgrade Version uses, and the 217Plus Full Version. Unfortunately, the different versions of the database engine can only access 217Plus datafiles created with the same version.



When a 217Plus data file that has been created with the 217Plus PRISM[®] Upgrade Version is attempted to be opened with the 217Plus Full Version, or vice-versa, 217Plus Error 63 is displayed. When this occurs, use this tool to convert the file to the local version.

The conversion process consists of:

1. Creating a transportable backup of the 217Plus datafile on the source computer
2. Copying the transportable backup to the target computer
3. Creating a 217Plus datafile from the transportable backup on the target computer.

To create the transportable backup:

1. Select "Create Transportable Backup" as the Conversion Type
2. Click the "..." button to select the 217Plus datafile (.RSE) to convert to a transportable backup
3. Click the "Convert" button.

The tool will create a transportable backup in the same directory as the source 217Plus datafile. The backup file will have the same file name¹ as the 217Plus datafile with a ".GBK" extension.

To restore from the transportable backup:

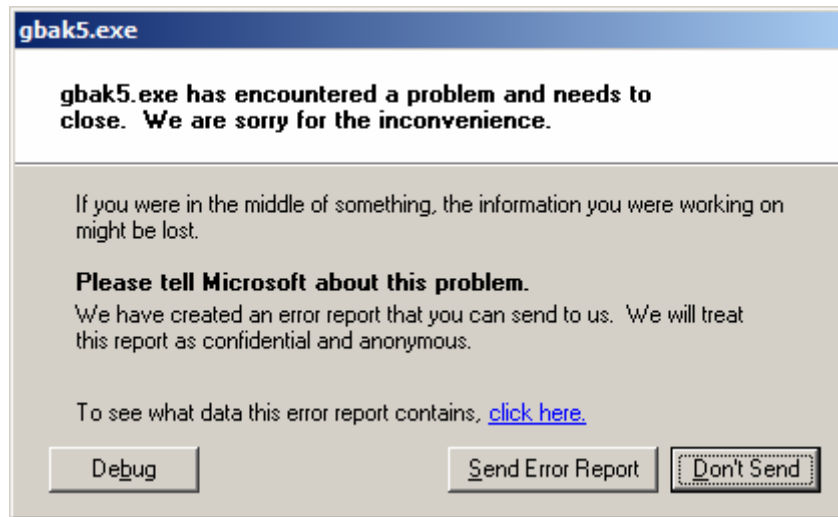
1. Select "Restore 217Plus Datafile" as the Conversion Type
2. Click the "..." button to select the transportable backup file (.GBK) to convert to the 217Plus datafile
3. Click the "Convert" button.

¹ Converted file names follow the 8.3 DOS convention. For example, the .RSE file "System File 1.RSE" will be converted to "System~1.GBK".

The tool will create a 217Plus datafile in the same directory as the source backup file. The 217Plus datafile will have the same file name as the backup file with an ".RSE" extension.

Please note:

When converting Transportable Backup files under some versions of Windows, the following error message may be displayed



This is not an actual error and does not affect the creation of the Transportable Backup file or the 217Plus System Data file. Click the "Don't Send" button to clear the error.